

MT625

TECHNICAL DATA SHEET



 **MANITOU**

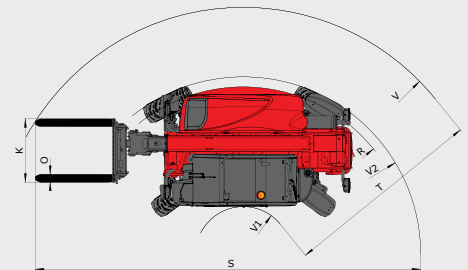
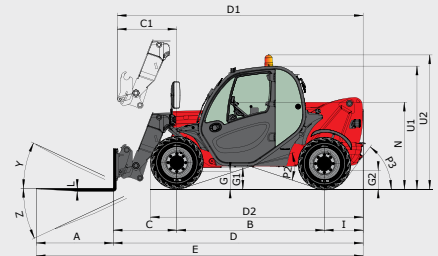
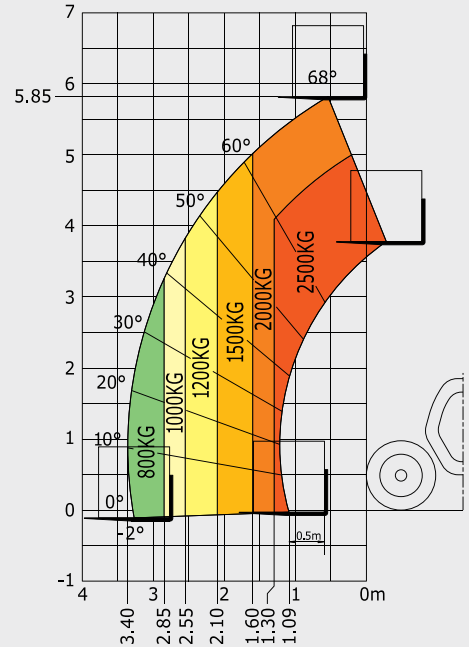
www.manitou.com

MT625

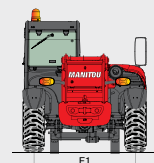
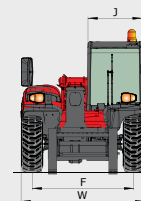
		MT 625
	Lifting capacity at 500 mm from forks heels	2500 kg
	Break-out force (ISO 8313)	3427 daN
	Lifting height	5.85 m
	Time: laden/unladen (in secs)	
	Lifting	8.00/8.00
	Lowering	5.40/5.30
	Extension	5.60/5.90
	Retraction	4.30/4.00
	Crowd	3.50
Dump	3.60	
	Tyres	12-16.5 12PR SKS CL TUBELESS
	Forks (mm)	
	Length x width x thickness	1200 x 125 x 45
	Braking	multiple-disk with oil bath
	KUBOTA STAGE III A Engine	V3307-DI-T-E3B
	Capacity	4 cyl. - 3331 cm ³
	Power at 2,600 rpm	75 HP/55.4 kW
	Max. torque at 1400 rpm (ISO 3046-1)	265 Nm
	Injection	direct
Cooling	water	
	Transmission	hydrostatic
	Reversing shift	electro-hydraulic
	Number of gears (forward/reverse)	2/2
	Max. travel speed	25 kph
	Hydraulics	
	Gear pump	87.90 l/min - 235 bar
	Capacities	
	Cooling system	12 l
	Engine oil	11.2 l
	Hydraulic oil	115 l
	Fuel	63 l
	Unladen weight (with forks)	4710 kg
	Width overall	1.81 m
	Height overall	1.92 m
	Length (at carriage)	3.90 m
	Turning radius (outer wheels)	3.31 m
	Ground clearance	0.33 m
	Drawbar pull	4035 daN
	Noise at driving position (LpA)	75 dB
	Environmental noise (LwA)	104 dB
	Vibration to whole hand/arm	< 2.50 m/s ²
	Vibration on driver's body	< 1.32 m/s ²

Maximum height reach: 0.66 m

As per standard EN 1459 annex B



mm		D2	I	P3	V1
A	1200	3275	603	52°	765
B	2300	E	J	R	V2
C	991	5094	797	3150	3310.5
C1	928	F	K	S	W
D	3894	1492	1015	6651.5	1813
D1	3831	F1	L	T	Y
		G	45	3935	12°
		G1	N	U1	Z
		240	1314	1920	117°
		G2	O	U2	
		253	125	2054	
			P2	V	
			37°	4700	



This brochure describes versions and configuration options for Manitou products which may be fitted with different equipment. The equipment described in this brochure may be standard, optional or not available depending on version. MANITOU reserves the right to change the specifications shown and described at any time and without prior warning. The manufacturer is not liable for the specifications given. For more information, contact your Manitou dealer. Non-contractual document. Product descriptions may differ from actual products. List of specifications non-exhaustive. The logos and visual identity of the company are the property of Manitou and may not be used without authorisation. All rights reserved. The photos and diagrams contained in this brochure are provided for information only.
MANITOU BF SA - Limited company with board of directors - Share capital: 39,547,824 euros - 857 802 508 RCS Nantes

